

Hydrogen Generators

for GC combustion detector applications

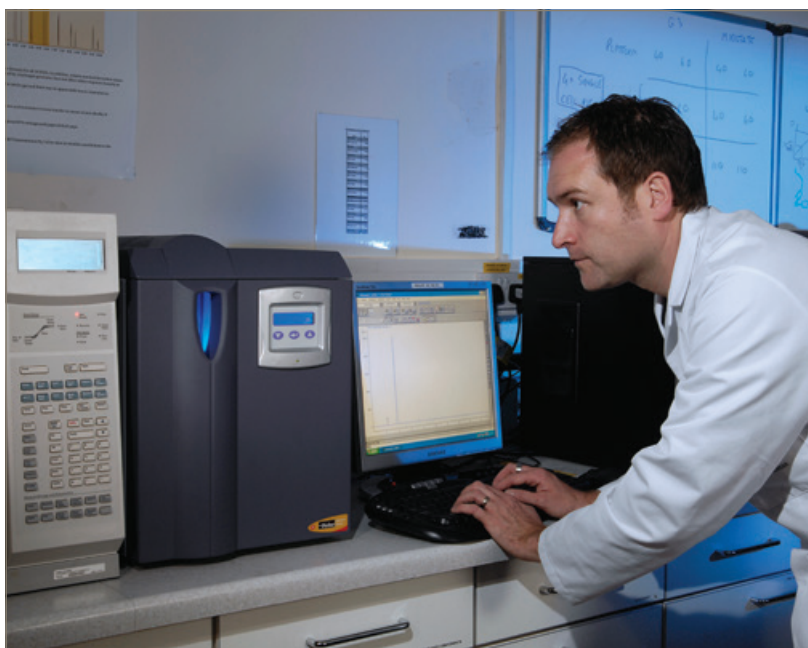


The Parker domnick hunter H-Fuel high purity hydrogen gas generators offer the optimum combination of safe operation, reliability and performance.

Utilising field proven PEM cell technology, hydrogen is produced on demand from deionised water and electricity, at low pressure and with minimal stored volume. Innovative control software allows unrivalled operational safety and reliability.

The H generators ideally supply fuel gas to all known GC combustion detectors used in today's laboratory workflows. Three models operate at flow rates; 160 ml/min, 250 ml/min and 500 ml/min.

Hydrogen generators are available with Remote Networking software. Remote Networking software allows up to 27 hydrogen generators to be actively controlled from one central PC, and facilitates true cascading capabilities.



Product Features:

- Eliminate dangerous hydrogen cylinders from the work place
- Simple to install and operate
- Compact, reliable with minimal maintenance
- Produces a continuous supply of 99.9995% pure hydrogen at up to 6.9 bar
- 3 year standard cell warranty
- Optional automatic water fill and remote networking capability



Product Selection

Model	Flow Rate	Purity*	Water Consumption (24/7, full flow)	Delivery Pressure		Optional Auto Water Fill (AWF)
	ml/min	%	L/week	bar g	psi g	
20H-Fuel	160	>99.9995	1.25	0.3-6.89	5-100	YES
40H-Fuel	250	>99.9995	2	0.3-6.89	5-100	YES
60H-Fuel	500	>99.9995	4	0.3-6.89	5-100	YES

*With respect to oxygen
Note: For auto water fill option add suffix AWF ie 20H-AWF

Technical Data

Ambient Temperature Range	5 - 40°C 41 - 104°F
Water Supply Pressure*	0.1 bar g 1.45 psi g
Water Supply Flow Rate*	1 L/min
Water Quality	Deionised. ASTM II, >1MΩ, <1µs, filtered to <100µm
Supply Voltage Range	90 - 264V 50/60Hz
Port Connections	Hydrogen Outlet Water Drain Water Fill*
	1/8" Compression Fitting Quick Release Push in Fitting Quick Release Push in Fitting

*With optional AWF

Weights and Dimensions

Model	Height (H)		Width (W)		Depth (D)		Weight (Empty)		Weight (Full of Water)	
	mm	in	mm	in	mm	in	kg	lb	kg	lb
20H-Fuel	456	17.9	342	13.5	437	17.2	19	41.9	23	50.7
40H-Fuel	456	17.9	342	13.5	437	17.2	19	41.9	23	50.7
60H-Fuel	456	17.9	342	13.5	437	17.2	19	41.9	23	50.7

Preventative Maintenance

Preventative Maintenance Kit	Part Number	Change Frequency
Replacement desiccant cartridge	MKH2PEM-D	As required*
6 month kit	M06.HMD.0001	6 months
24 month kit	M24.HMD.0001	24 months
60 month kit	M60.HMD.0001	60 months

* 20H Continuous operation approx 6 to 7 months
* 40H Continuous operation approx 4 to 5 months
* 60H Continuous operation approx 2 to 3 months

Optional Extra's

Description	Part Number	Required for
Remote Networking Module	H2-REMOTE-NET-DH 604971530	Allows cascading of two generators
Remote Networking Expansion Module	H2-REMOTE-EXP-DH 6049711540	Required to cascade each additional generator

